

Anti-Human IgG F(c) Secondary Antibody
Rabbit Polyclonal, Unconjugated
Catalog # ASR1348**Specification****Anti-Human IgG F(c) Secondary Antibody - Product Information**

Description	Anti-HUMAN IgG F(c) (RABBIT) Antibody
Host	Rabbit
Conjugate	Unconjugated
Target Species	Human
Clonality	Polyclonal
Application	WB, IHC, E
Application Note	ELISA 1:20,000-1:100,000;Western Blot 1:2,000-1:10,000;Immunohistochemistry 1:1,000-1:5,000
Physical State	Lyophilized
Host Isotype	Antiserum
Target Isotype	IgG F(c)
Buffer	0.02 M Potassium Phosphate, 0.15 M Sodium Chloride, pH 7.2
Immunogen	Human IgG F(c) fragment
Reconstitution Volume	2.0 mL
Reconstitution Buffer	Restore with deionized water (or equivalent)
Stabilizer	None
Preservative	0.01% (w/v) Sodium Azide

Anti-Human IgG F(c) Secondary Antibody - Additional Information**Shipping Condition**

Ambient

Purity

Human IgG F(c) Antibody was prepared from monospecific antiserum by a delipidation and defibrination. Assay by immunoelectrophoresis resulted in a single precipitin arc against Human IgG, Human IgG F(c) and Human Serum. No reaction was observed against Human IgG F(ab')₂.

Storage Condition

Store vial at 4° C prior to restoration. For extended storage aliquot contents and freeze at -20° C or below. Avoid cycles of freezing and thawing. Centrifuge product if not completely clear after standing at room temperature. This product is stable for several weeks at 4° C as an undiluted liquid. Dilute only prior to immediate use.

Precautions Note

This product is for research use only and is not intended for therapeutic or diagnostic applications.

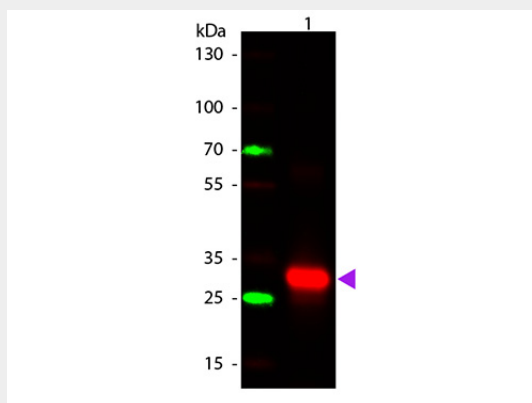
Anti-Human IgG F(c) Secondary Antibody - Protein Information

Anti-Human IgG F(c) Secondary Antibody - Protocols

Provided below are standard protocols that you may find useful for product applications.

- [Western Blot](#)
- [Blocking Peptides](#)
- [Dot Blot](#)
- [Immunohistochemistry](#)
- [Immunofluorescence](#)
- [Immunoprecipitation](#)
- [Flow Cytometry](#)
- [Cell Culture](#)

Anti-Human IgG F(c) Secondary Antibody - Images



Western Blot of Rabbit anti-Human IgG F(c) Secondary Antibody. Lane 1: Human F(c). Lane 2: None. Load: 50 ng per lane. Primary antibody: Human IgG F(c) secondary antibody at 1:1000 overnight at 4°C. Secondary antibody: DyLight™ 649 rabbit secondary antibody at 1:20,000 for 30 min at RT. Block: MB-070 for 30 min at RT. Predicted/Observed size: 28 kDa, 28 kDa for Human IgG F(c). Other band(s): None.